



APPLICATION NOTE

APP #130

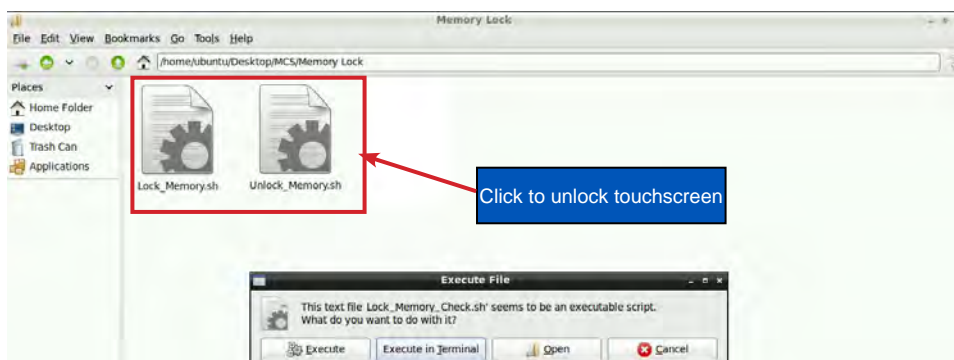
Changing the IP Network setting on MCS-TOUCH

Unlock the Touchscreen

1. Navigate to the 'Desktop', click on 'MCS TOOLS'.



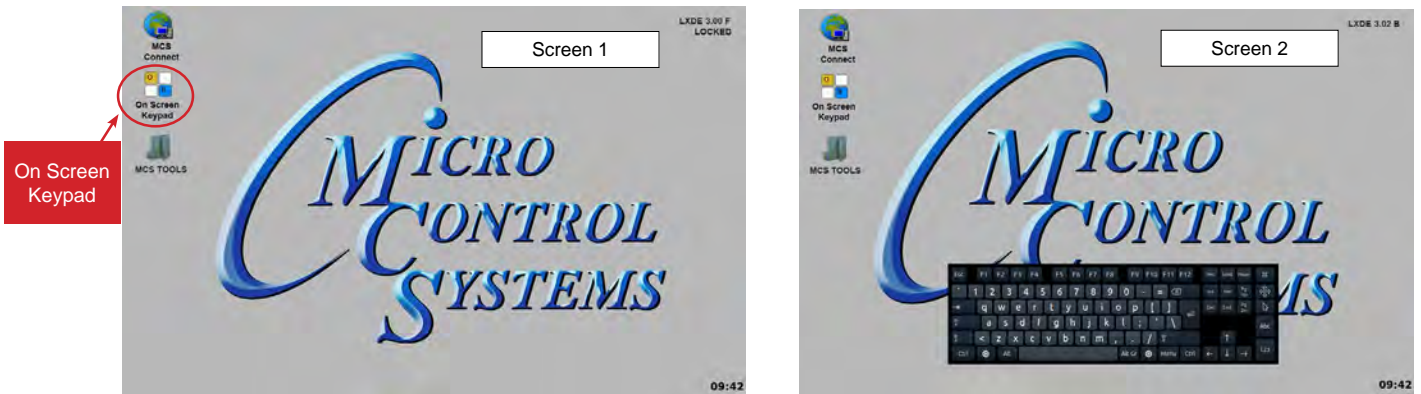
2. Click on the 'Memory Lock folder' screen 1.
3. Double click the 'Unlock_Memory.sh'
4. Click 'Execute'
5. The touchscreen will reboot and show unlocked at the top right corner..



1. KEYPAD - On the main screen, click on Keypad Icon as shown in screen 1.

'ON SCREEN KEYPAD'

Screen 2 shows keypad display. Use the stylus and keypad to enter or make adjustments.



Changing the IP address for the Touchscreen to communicate with your Company's Network using Ethernet.



1. At the touchscreen main screen, click on **'MCS TOOLS' folder** as seen in screen 1.

UTILITIES FOLDER

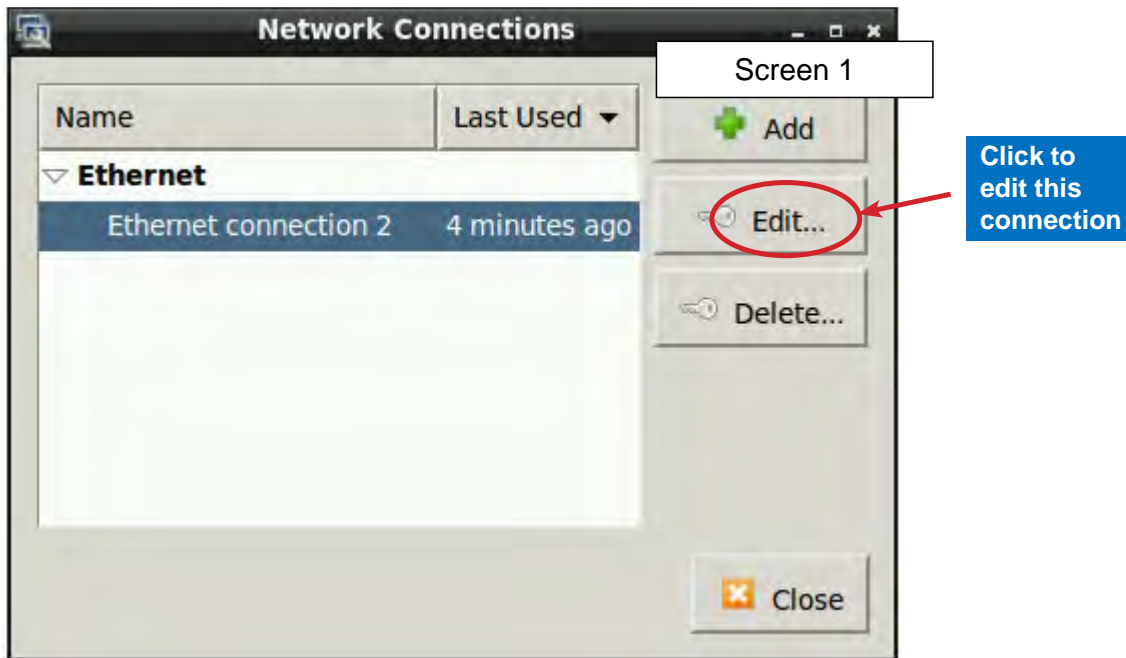
1. Screen 2 appears, click on 'Utilities' to view contents of folder.

2. Click on **'Network Connections'** as shown in screen 3.



Network Connections Screen

1. Next display, screen 1 shows network connections screen.
2. Your touchscreen will show
3. **'Ethernet connection'**, click to highlight.
4. Click on **'Edit'**



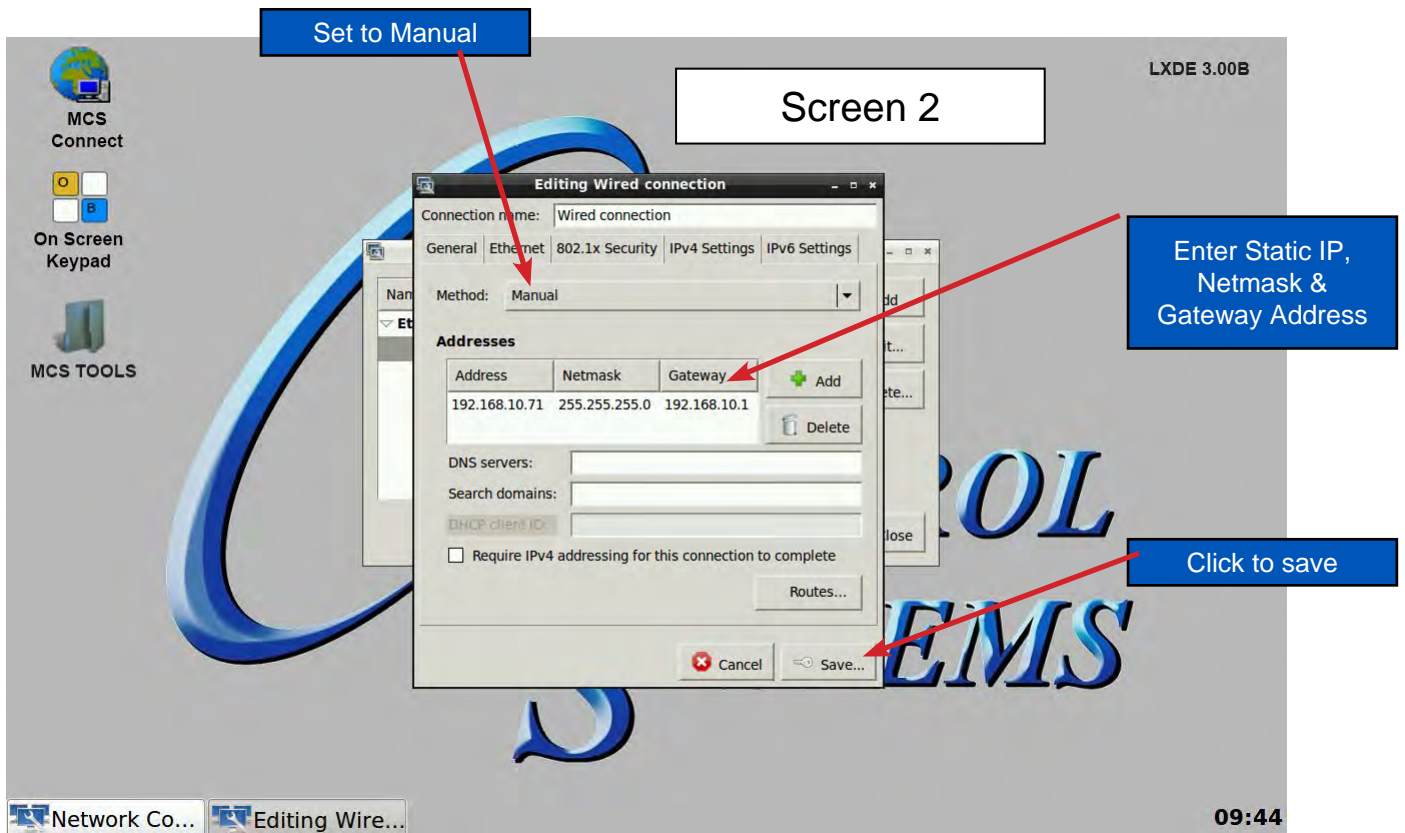
Selecting a Device MAC address

1. **Go to the Ethernet tab.**
2. **Click the drop down arrow on the right side of "Device MAC address:"**
3. **Select the MAC address that has (eth*) at the end. (The number at the end varies).**



Adding IP Address

On screen 2. click on IPV4, than set 'Method' to 'Manual' than click on 'Address', enter the IP address, netmask and gateway addresses. Click to save to touchscreen memory.

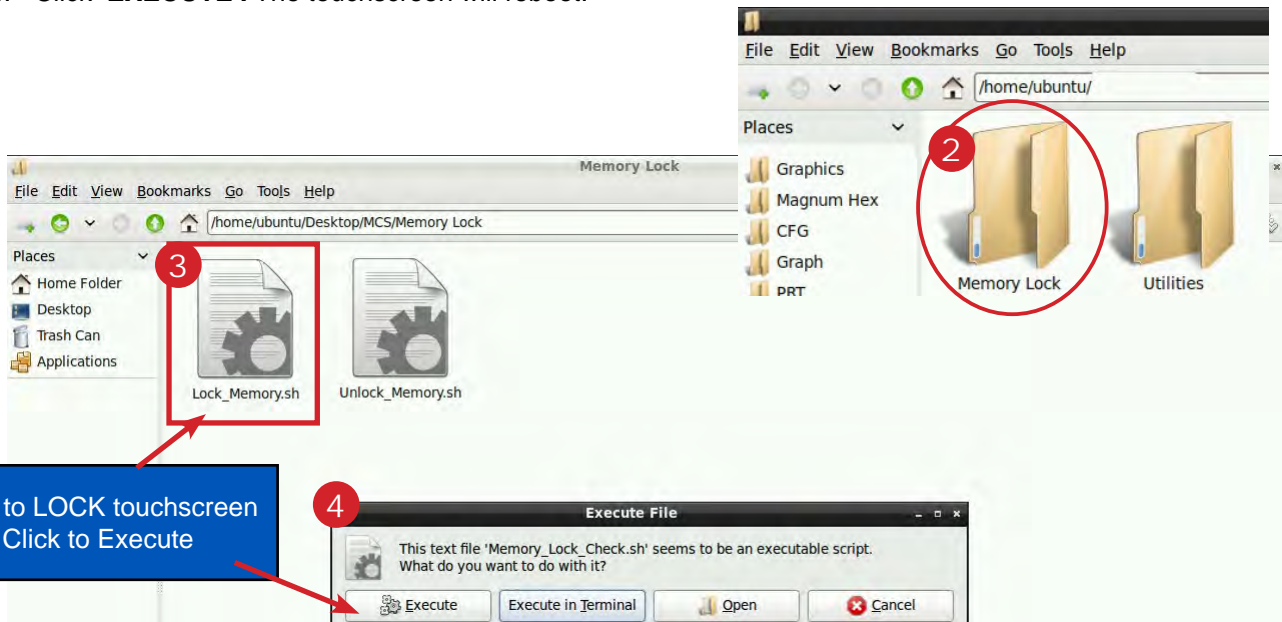


NOTE; YOU MUST EDIT THE AUTO START ADDRESS

Re-Locking Touchscreen



1. Double click the 'MCS TOOLS' Icon on the Desktop.
2. Double click 'Memory Lock' sub directory.
3. Double click 'Lock Memory'.
4. Click 'EXECUTE'. The touchscreen will reboot.

**Revision History**

| Date | Author | Description |
|------------|--------|-------------------------------------|
| 10-19-17 | DEW | Setup from Touchscreen Manual |
| 09-30-19 | DEW | edits made as per Bret |
| 04-8-2020 | DEW | combine APP 129 AND 127 as per Bret |
| 06-30-2020 | DEW | Make changes to APP 129 |
| 10-01-2021 | CH | Add Mac Address change |

Any questions regarding this release, contact: support@mcscontrols.com
 Micro Control Systems, Inc. 5580 Enterprise Parkway Fort Myers, Florida 33905
 (239)694-0089 FAX: (239)694-0031 www.mcscontrols.com

Information contained in this document has been prepared by Micro Control Systems, Inc. and is copyright © protected 2021.
 Copying or distributing this document is prohibited unless expressly approved by MCS.